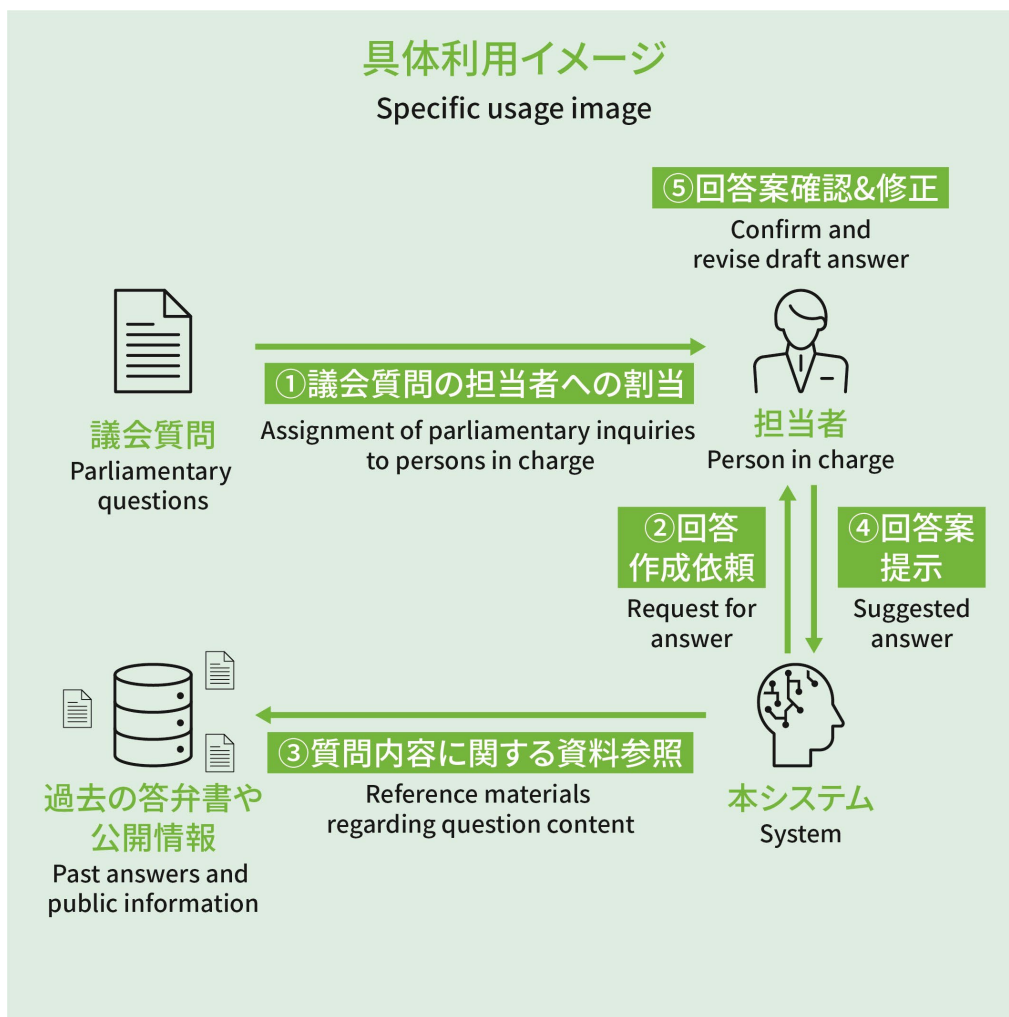


Assistive technology for writing
parliamentary answers in municipalities

DOCOMO will improve the efficiency of council answer writing
in municipalities through the use of LLMs and RAGs

#Productivity Improvement #Regional Revitalization



///Technical Issue

Insufficient balance of information references or misinterpretation of questions to produce appropriate answers to questions.

///Research Goal

We will put an LLM-based answer writing support system into practical use to improve the efficiency parliamentary response operations in local governments.

---Technology

- Utilize the Large-scale Language Model (LLM) (e.g. NTT's Large-scale Language Model 'tsuzumi', etc.).
- Combination of information judgment algorithms and search recommendation algorithms.

---Applicable Business

In the municipal field, we expect our system to be used for answer writing work in municipalities.
(2024/4Q: Service verification 2025/3Q: Service provision)[Market size: 200 billion yen]

---Novelty

By combining an algorithm that understands the question and searches for the most appropriate information with an algorithm that allows the LLM to determine the usefulness and other aspects of the information, it is possible to create a human-like answer in a short period of time.