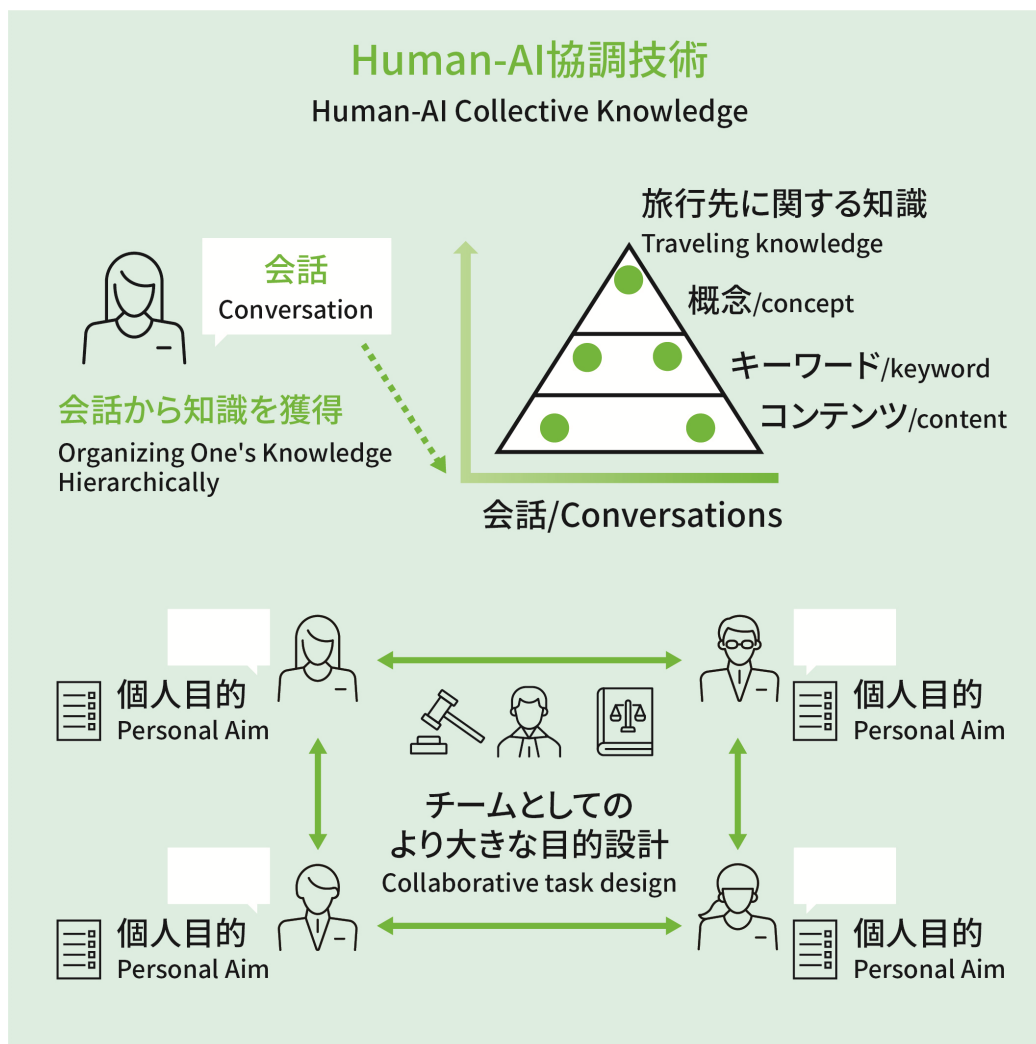


## AI Constellation 2

AI agents autonomously grow and collaborate with humans to support creative and productive activities

#Customer Experience Value Creation, #Productivity Improvement, #Well-being, Human Capital Management



### ///Technical Issue

LLM agents are unable to autonomously coordinate different tasks, design a unified complex task, and engage in productive and creative activities like human team play.

### ///Research Goal

We aim to create "Human-AI Society" where AI, which autonomously grows by acquiring knowledge through diverse activities, collaborates with humans to generate massive business opportunities.

### ---Technology

Agents adjust tasks and optimize team's output by leveraging acquired structured knowledge of others. Novelty: Integrating tasks and knowledge to achieve cognitive synergy and boost production accuracy.

### ---Novelty

AI agents grow by collaborating with humans, enhancing creativity and reliability through conversation. They achieve high-precision complex task resolution, showing a 3-15% accuracy improvement over state-of-the-art methods.

### ---Applicable Business

In a Human-AI society, multiple agents will collaborate with humans to concretize simple and vague user demands, enhancing service appeal by leveraging human creativity and creating new, massive business opportunities in the future smart life market.